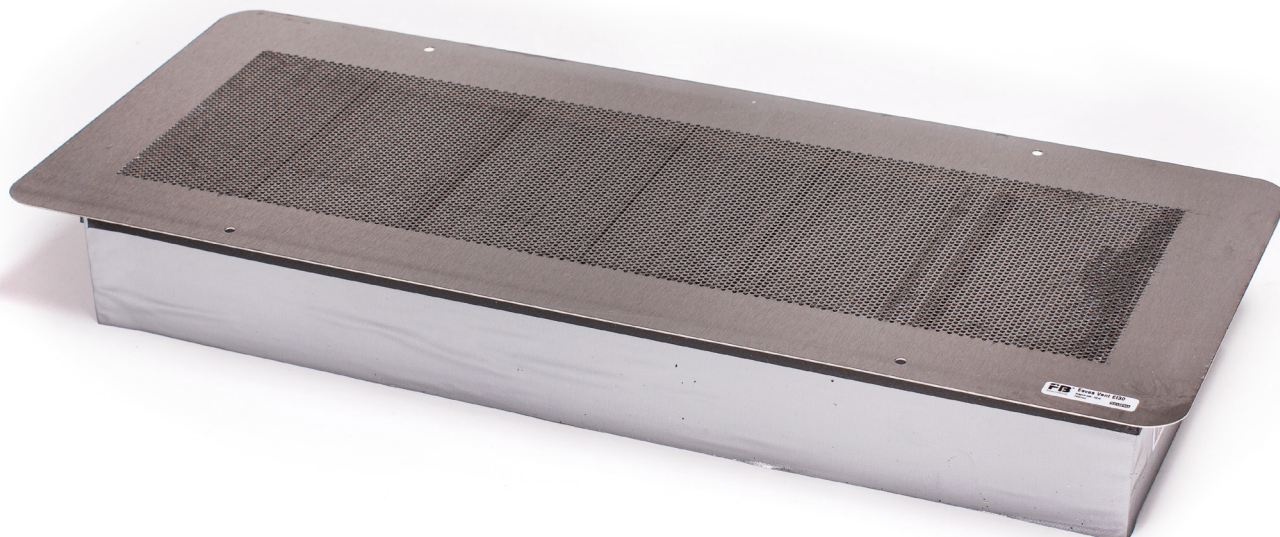


EAVES VENT

PRODUCT SHEET



Eaves vent with fire resistance

Venting through the eave ensures adequate venting of the roof structure and of the attic. It also prevents fungal growth and other moisture damage.

However, this principle has always been problematic because of the risk of fire spreading to the ceiling and the roof, and by flames breaking out through the windows and up through the ventilation openings in the eaves.

This kind of fire spread often lead to rapid and extensive fire, leading to major material damage. Previous surveys have shown that up to 80% of fires in row house buildings were spread through the eave and into the attic and roof construction.

WILDFIRES

Wildfires and bush fires generate ember storms, which spread the fire ahead of the flames. Buildings in wildland urban interface (WUI) areas should be protected with ventilation products with flame and ember stop.

The Firebreather Eave Vent have the unique feature of blocking the spread of flames and embers instantly.

PRODUCT FACTS

Size and weight

Dimensions including flange:
230 x 570 x 77 mm

Dimensions excluding flange:
176 x 516 x 76 mm

Weight:
2,9 kg

Weight including packaging:
3,4 kg

Fire resistance

E130

Third party approval by RISE
RISEFR 030-0310

Tested and classified in regulations with

EN 1363-1
EN 1364-5
EN 1363-2

Materials

AISI 304 Stainless steel
Intumescent
Wood

Effective ventilation area

Approx. 30% of the total area

EAVES VENT

PRODUCT SHEET

MAINTENANCE

The FB Eave Vent contains no moving parts and requires no special maintenance regarding functional safety.

See stainless steel maintenance guide on our web page for general advice on protection and maintenance of stainless steel.

In the same way as with conventional ventilation through insect mesh, the Firebreather Eave Vent should be inspected for clogging of insects and dust, as it can reduce the ventilation effect. It's recommended that the outside is checked every 5 year and the inside every 10 years.

ENVIRONMENT

The product complies with the chemical regulation REACH.

Waste should be recycled. Wrecked FB eave vents are made of stainless steel and can be sold as scrap iron, the material is then recycled. This recycling of steel helps to make this product a very environmentally friendly alternative.

The intumescent mass can be disposed as residual waste.

RESPONSIBILITY

Securo AS responsibility is limited to delivering products with documented performance. Projects subject to application under national planning and building acts, companies with responsibility for planning must determine the need for ventilation and fire resistance.

