

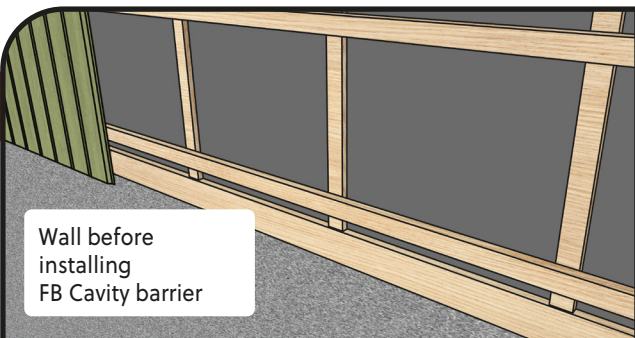
INSTALLATION GUIDE FB CAVITY BARRIER

FB CAVITY BARRIER

Installation guide according to product documentation
RISEFR 010-0238

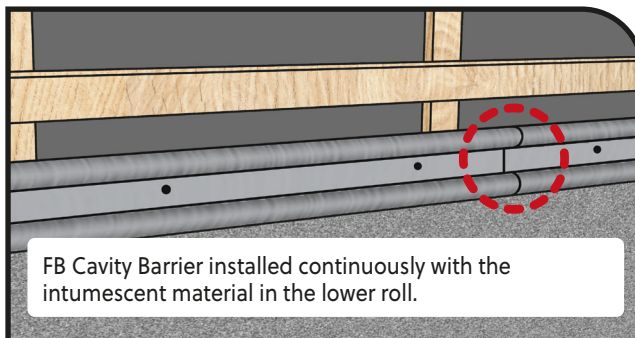
1

Wall before
installing
FB Cavity barrier



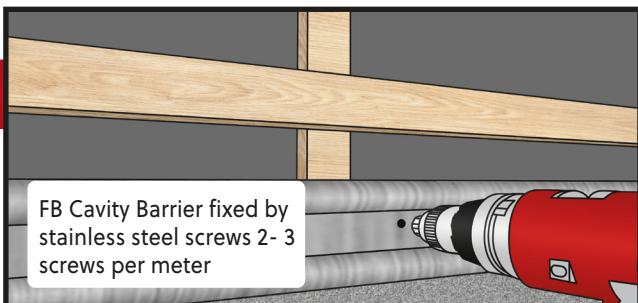
2

FB Cavity Barrier installed continuously with the
intumescent material in the lower roll.



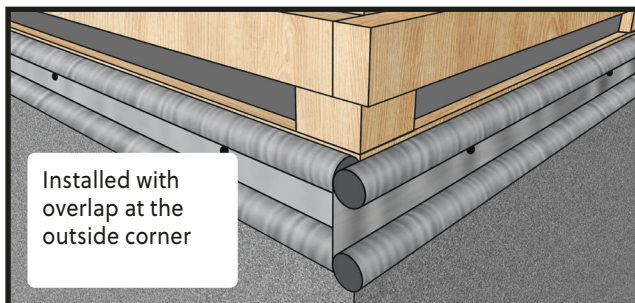
3

FB Cavity Barrier fixed by
stainless steel screws 2- 3
screws per meter



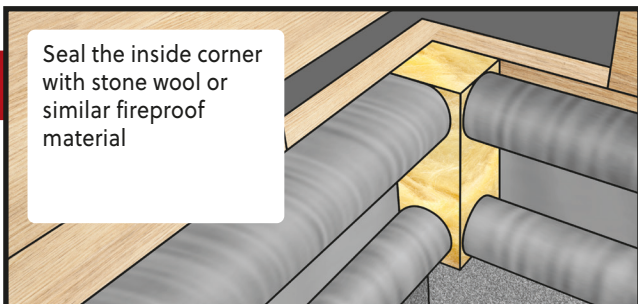
4

Installed with
overlap at the
outside corner



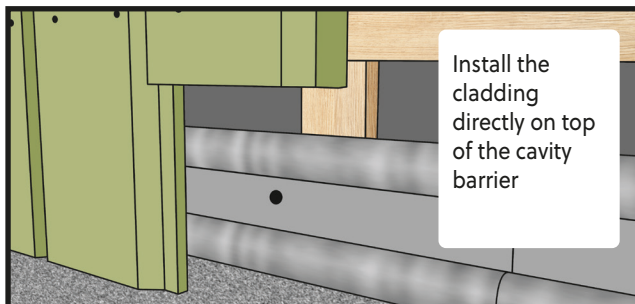
5

Seal the inside corner
with stone wool or
similar fireproof
material



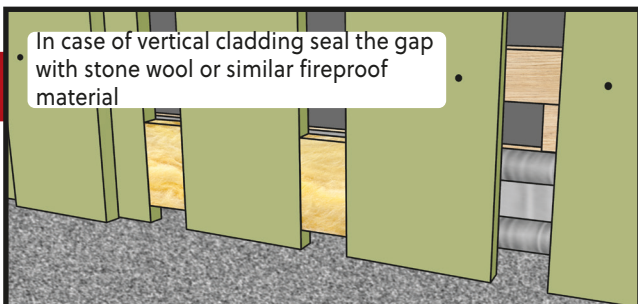
6

Install the
cladding
directly on top
of the cavity
barrier



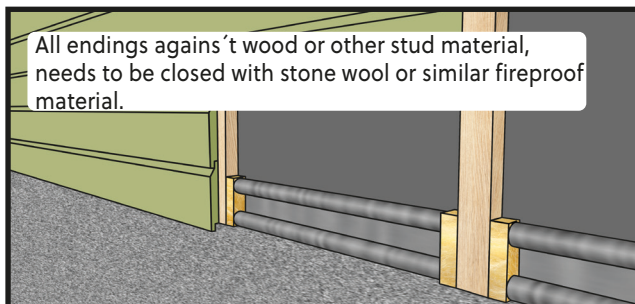
7

In case of vertical cladding seal the gap
with stone wool or similar fireproof
material



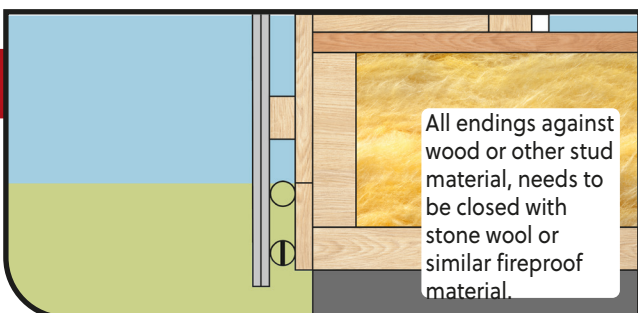
8

All endings against wood or other stud material,
needs to be closed with stone wool or similar fireproof
material.



9

All endings against
wood or other stud
material, needs to
be closed with
stone wool or
similar fireproof
material.



10

FB Cavity Barrier lengths are cut
to fit by grinder or stainless-steel
metal cutting circular saw.

